

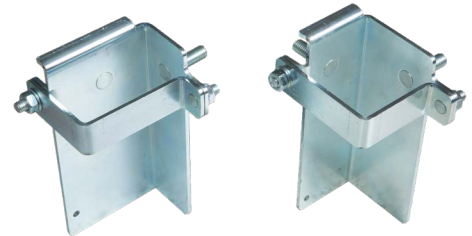
# BERGVIK MOUNTING CLAMP

## FOR CABLE LADDER BRACKETS

Bergvik's pedestal mounting clamp for cable ladders is an accessory customized for Iso Floor and Iso Floor Seismic pedestals, for floor height of minimum 16 inches. The mounting clamps are suited for the most common brackets in the market. You can also attach other equipment, such as "Starline" rails directly to the mounting clamps.

The mounting clamps are very easy to install and have support bolt studs (incl 2 pieces 3/8" self clinching screw) for assembly of cable ladder brackets on both sides of the bracket. If support studs are needed on more sides, two clamps can be installed, which gives additional options.

The mounting clamp is easily mounted to the pedestals with 2 pieces of 5/16" nuts that come with the product kits. The holder clamps are delivered electro-plated and come complete for mounting of 2 pieces of cable ladder brackets per pedestal.



ART. NO		DESCRIPTION	
46-8040		80/40 mounting clamp for Iso Floor standard pedestal	
46-2525		2.5"/2.5" mounting clamp for Iso Floor Seismic pedestal	
LENGTH		WIDTH	DEPTH
6.5 inches		80 mm	40 mm
6.5 inches		2.5 inches	2.5 inches
FINISH		MAXIMUM LOADING PER BRACKET	
Electro-plated 15 µm		At c/c 39 inches, max loading per running 3 feet ladder is 300 kg or 667 lbs	
		At c/c 78 inches, max loading per running 3 feet ladder is 150 kg or 333 lbs	

