

PRODUCT ACCESSORIES



AIRGUARD Flush mount

- Splitable.

Air Guard® Cable Seal is a product that helps prevent air loss in plenum cooled floors when access holes are required for cable routing through the floor. An immediate "energy-savings" benefit is realized by using the Air Guard®. It significantly minimizes cool air loss while improving the static pressure to cool data center equipment which helps prevent expensive electric equipment from overheating.

The overlapping brushes in Air Guard®'s unique design allow flexibility and simplicity in cable routing. The brushes seal the floor openings, preventing debris from entering the air plenum and causing damage to sensitive electronic equipment.

Benefits:

- Reduce air loss and increase under-floor static pressure
- Improve cooling efficiencies and extended cooling equipment life
- Dramatically reduced plant-running costs. Over 50% of conditioned air does not get to air intake of data room equipment due to unsealed openings
- Facilitates Cold / Hot aisle best practice
- Easy to install, either at the edge or within the floor panel
- Removable brush section allows for easy cable release
- Made from flame retardant ABS material

Dimensions: Cut out size: 265x115 mm. Overall size: 328x162 mm.

Article no: [30-1GTAG1](#)



AIRGUARD Flush mount Special incl. brush and colour codes

- Splitable. Label: Power and Data. Colours: Red/Yellow/Blue/White.

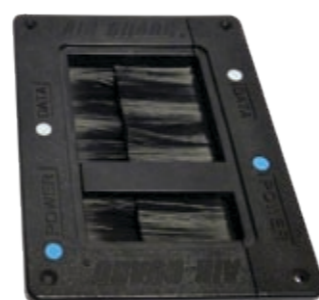
Air Guard, cable sealing, for use in Access

Flooring panel

The overlapping brushes in Air Guard's unique design allow flexibility and simplicity in cable routing. The brushes seal the floor openings, preventing debris from entering the air plenum and causing damage to sensitive electronic equipment.

The Air Guard is easily installed in any location on the floor panel. Two Air Guard components are interlocked and installed on the floor panel to accommodate a variety of cable sizes.

Relocating the Air Guard is also simple and inexpensive.



Includes a divider for separation Power and Data.

Choose the Air Guard Cable Seal when making new installations in your data center to maximize your energy efficiency.

Air Guard Flush Mount Special:

- Includes a divider for separation between Power and Data.
- Labels for Power and Data. 4 colour code markers Red/Yellow/Blue/White
- Reduces air loss in plenum cooled floors and increases under-floor static pressure.
- Seals cable openings with an overlapping brush.
- Due to the splitable design the air guard can be installed even on existing installation
- Provided with an overlapping flange
- Allows flexibility and simplicity in cable routing.
- Flame retardant ABS polycarbonate material provides a finished look on all raised floor panels, solid construction and the textured surface compliments all floor coverings.
- Installation is simple and inexpensive.
- Includes mounting hardware.

Dimensions:

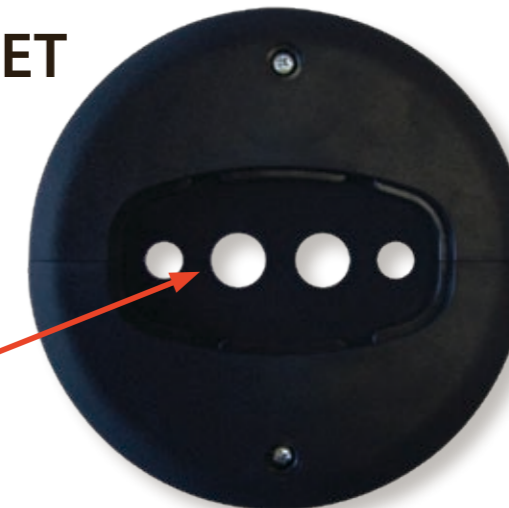
Cut out size: 183 x 136 mm. Overall size: 228 x 170 mm

Cable entry space. **Power:** 35 x 92 mm. **Data:** 92 x 92 mm

Article no: [30-1GTAGSA](#)

AIR GROMMET

- Splitable.



Cable sealing, which prevents air loss thru the grommet.

AIR BLOCK 152 mm Air Plenum Grommet

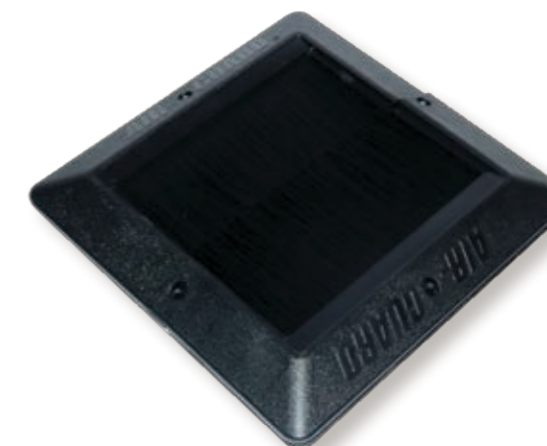
- Heavy Duty Circular Floor Grommet with integrated EDPM gasket material for sealing around cables through Access Flooring. Controls bypass air by forming airtight seal around cables. Eliminates AIR LEAKAGE in Underfloor Air Installations.
- Standard Gasket has four removable cable knock-outs.
- Grommet splits into **two sections** for easy installation. No fishing cables through the grommet.
- Engineered safety cover provides protection feature and eliminates the jobsite issues of stepping into open holes. Cover also protects the gasket area when the grommet is not in use.
- Grommet mechanically locks into a 152 mm diameter hole in the access floor panel via two screws toggles located on the top surface of the grommet, exposed screws are finished with a cap plug that matches the grommet surface.
- Grommet is constructed from engineered fireproof materials.

Article no: [30-1GT060APG](#)

AIR Gaurd® Surface Mount

- Splitable.

The new Air Guard® Surface Mount helps prevent air loss in plenum cooled floors when previously cut open access holes need to be sealed.



Air Guard Surface Mount:

- Reduces air loss in plenum cooled floors and increases under-floor static pressure.
- Seals cable openings to prevent under-floor contamination.
- Two piece assembly designed to retrofit around existing cables without the need to disconnect cables.
- Flame retardant ABS polycarbonate material provides a finished look on all raised floor panels.
- Solid construction and the textured surface compliments all floor coverings.
- Installation is simple and inexpensive.
- Includes mounting hardware and adhesive application option.
- Dimensions:

o Overall dimensions: 254 x 254 mm (10" x 10")

o Coverage: 203 x 203 mm (8" x 8")

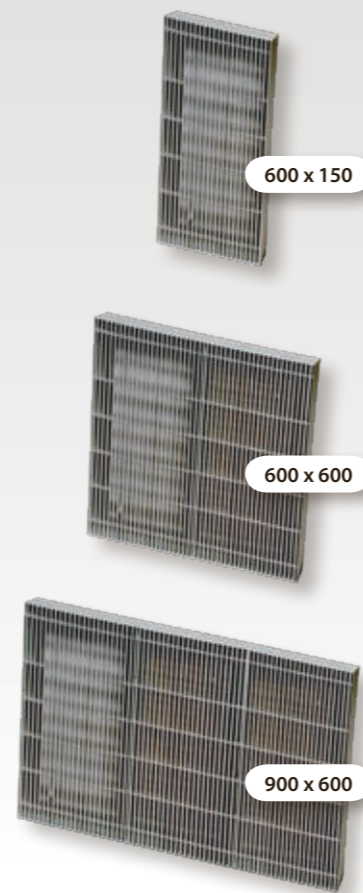
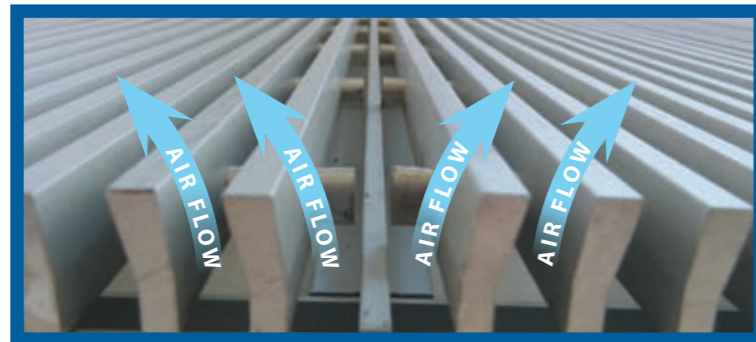
o Usable space: - 165 x 165 mm (6.5" X 6.5")

Article no: [30-1GTAG3](#)

FG Air Grille

Specification

- Aluminum construction by Prodal.
- Class A flame spread rating.
- Interchangeable with Bergvik Laminate Panels.
- 39% open free area.
- Airflow direction (static) available in 15 and 30 degrees .
- see separate louver data sheet
- Panel sizes: 600mm (23.62") x 150 mm (5.91"),
600 mm square and 600mm x 900mm (35.93")
- special alternate sizes on request
- Panel height: 38 mm (1.5 inch).
- Panel weight: 11 kg (24 lbs) for 600mm square panel.
- Available with or without damper.
- Damper can be adjusted from the top to restrict airflow by up to 100%.

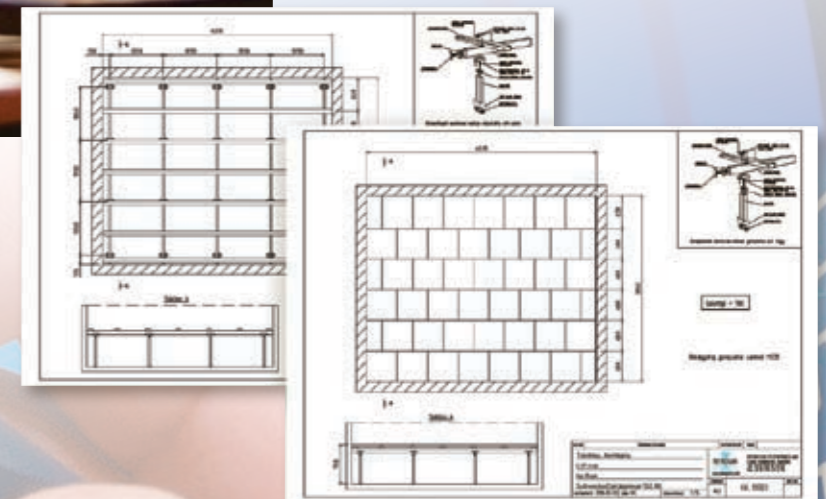


The above details refer to the FG type floor grille without OBD. As the effective free area of the blade type OBD is vastly greater than the grille, the resulting pressure drop across the damper is negligible.

Article no: 303 - 6600 - 600 x 600mm

Core velocity		Airflow		Pressure drop		
m/s	m3/s	m3/h	Pa	Core Velocity	Air Volume	Static Pressure
				feet/second	CFM	In. H2O
1.0	0.098	353	1	3.28	208	0.004015
1.2	0.118	423	2	3.94	250	0.008029
1.4	0.137	494	2	4.59	290	0.008029
1.6	0.157	564	3	5.25	333	0.012044
1.8	0.176	635	4	5.91	373	0.016059
2.0	0.196	706	4	6.56	415	0.016059
2.2	0.216	776	5	7.22	458	0.020074
2.4	0.235	847	5	7.87	498	0.020074
2.6	0.255	917	6	8.53	540	0.024088
2.8	0.274	988	7	9.19	581	0.028103
3.0	0.294	1058	8	9.84	623	0.032118
3.2	0.314	1129	9	10.5	665	0.036133
3.4	0.333	1200	10	11.15	706	0.040147
3.6	0.353	1270	11	11.81	748	0.044162
3.8	0.372	1341	12	12.47	788	0.048177
4.0	0.392	1411	14	13.12	831	0.056206

Auto CAD Drawings



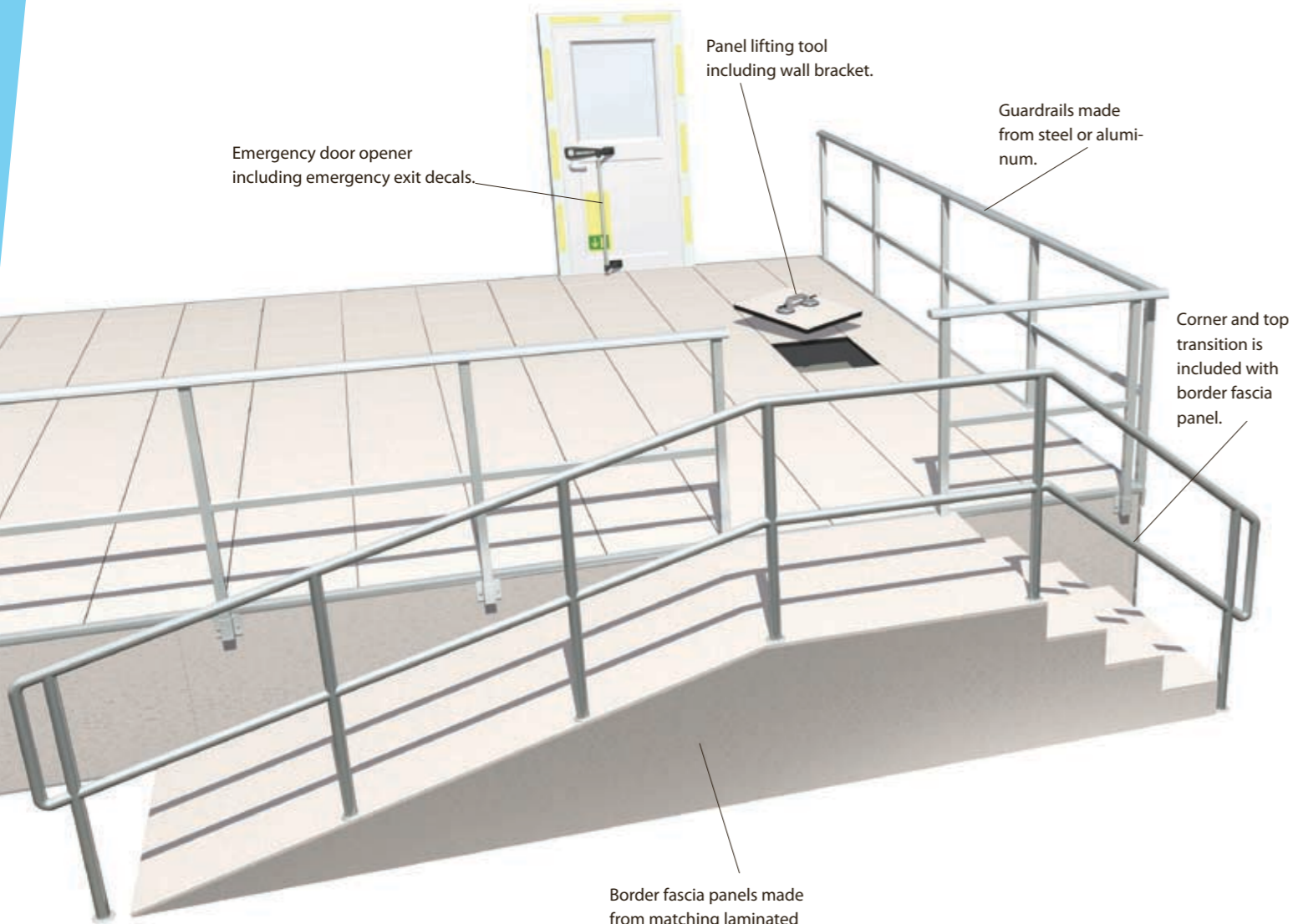
Our design department generates Auto CAD floor layout drawings quickly, based on customers floor plan.



Accessories



Stepless brackets for mounting on pedestals in both directions will provide time savings during cable installation. The bracket can be supplied for all cable ladder widths (ISO Floor only).



Emergency door opener including emergency exit decals.

Panel lifting tool including wall bracket.

Guardrails made from steel or aluminum.

Corner and top transition is included with border fascia panel.

Border fascia panels made from matching laminated boards with transition details of aluminum.



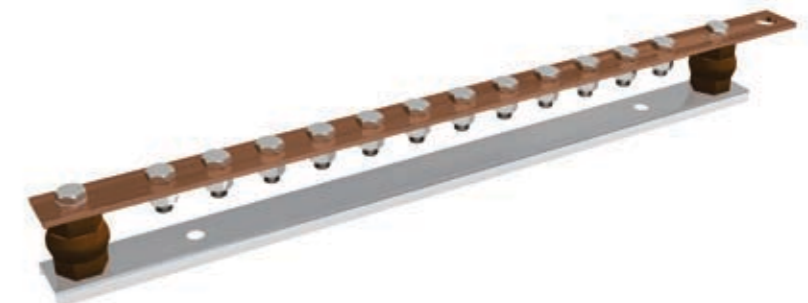
Pre-cut floor panel
Floor panel with customized hole pattern can be supplied.



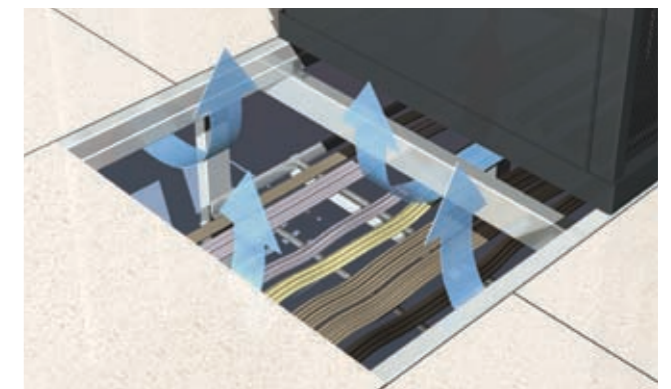
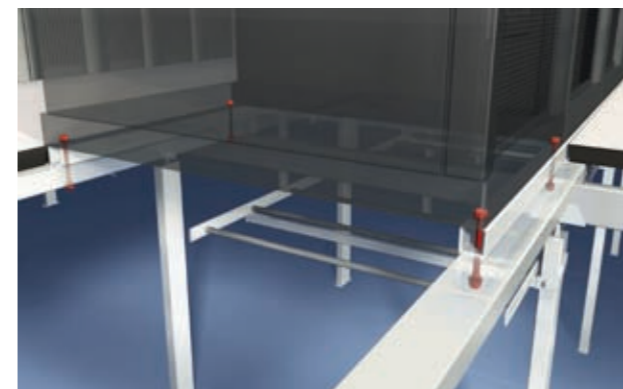
Bergvik seismic bracing frames
With the pre torqued design, Bergvik's seismic frame for power and telecom cabinets, etc., in zones 3-4 is the safest construction on the market. Used by leading telecom operators around the world.



Pedestal support & beam section joint bracket for seismic zones 1-2
Reinforced design having +/- 1" (25 mm) level adjustment at the base plate, designed and tested for seismic zones 1-2.



Grounding block with 12 connections.



1.5"x1.5" (38 x 38 mm) steel tube replaces panel under rack to provide an "open bottom" access, offering direct cooling (ISO Floor only).

BERGVIK PRODUCT LINE:



Iso Floor

Optional brochure for power distribution rooms and process lines.



HiFlex Floor

High-built power distribution floor as an alternative to concrete beams, where incorrectly positioned cable cut-outs may delay and raise the price of the project.



Tech Floor

An economical standard pedestal floor for installations in offices, and 911 communication centers with low static loads.



Seismic Bracing Frames

Bergvik designs, full-scale tests and manufactures seismic mechanical devices for the protection of critical equipment.

Bergvik Flooring AB
P.O. Box 46 Vannsätter
SE-820 23 Bergvik, Sweden
Tel: +46 270 728 00
Fax: +46 270 728 04
Email: info@bergvik.com
Website: www.bergvik.com

Bergvik Flooring N. A., Inc.
2040 Shipley Drive, Bldg. C-3
Salisbury, MD 21801. USA.
Tel: +1 (410) 548 1449
Fax: +1 (410) 548 2630
Email: marketing@bergvik.com
Website: www.bergvik.com

Bergvik Flooring (Pty) Ltd
Unit 2, Bataleur park, Olive Grove
Industrial Estate, Old Paardevlei
Road, Somerset West, 7130, RSA
Tel: +27 21 851 1966
Fax: +27 21 852 7662
Email: sales.ptysa@bergvik.com
Website: www.bergvik.com